



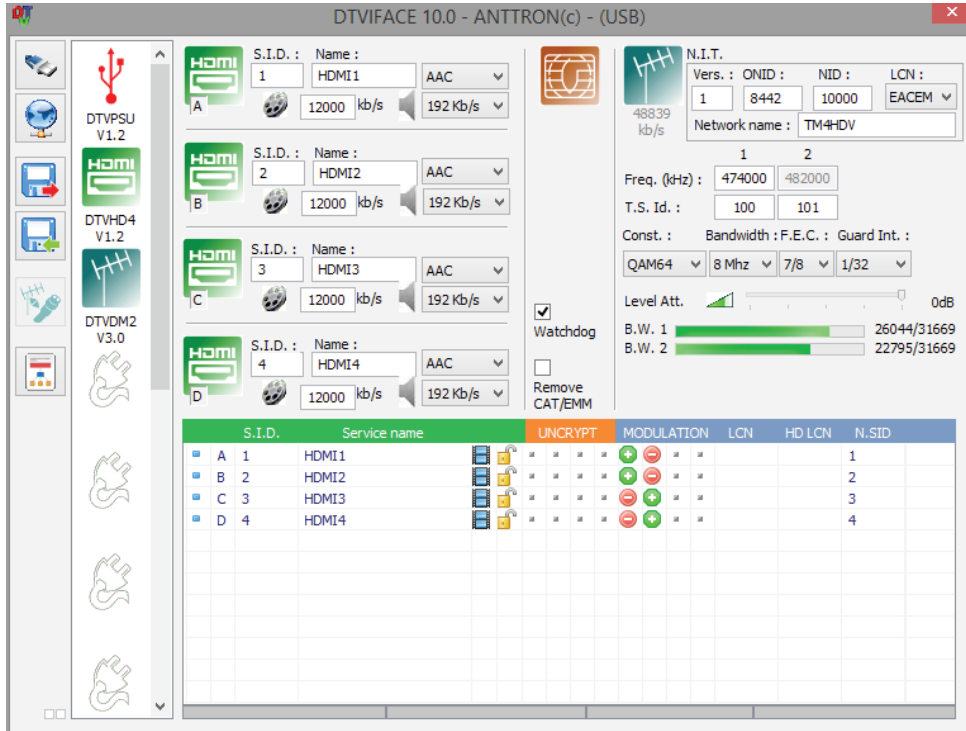
The **TM4HDV** encoder/ modulator allows to encode up to 4 HDMI sources and this with a resolution of up 1080P for each input.

The 4 sources are then available in DVBT or DVBC at the output on 2 adjacent channels.



Product manufactured and produced in Belgium

The **TM4HDV** can be easily programmed using our general programming software = **DTVI face**



## TECHNICAL SPECIFICATIONS:

<b>Video inputs</b>	Inputs x 4	HDMI
	Resolutions	720p - 1080P
	Compression	H.264 - bitrate 5-15 Mb/s
<b>Audio inputs</b>	Inputs	HDMI
	Sampling rate	HDMI (32kHz / 44.1 kHz / 48 kHz)
	Compression	AAC-LC / MPEG1-L2 –symbol rate 128-384 Kb/s
<b>DVB processing</b>	Table Insertion	PAT, PMT, SDT, NIT, EIT
	Configuration	Program/network name , SID, LCN, TSID, ONID, NID, EIT, versions, audio, video PIDs...
<b>DVB-T output 2 adjacent channels</b>	Frequency/level	170-230 MHz + 470-862 MHz / > 95dBµV
	Constellation - FEC	QPSK/16QAM/64QAM - 1/2, 2/3, 3/4, 5/6, 7/8
	Guard Interval	1/4, 1/8, 1/16, 1/32
	Mode - MER	2K/8K - 35 dB
<b>DVB-C output* 2 adjacent channels</b>	Frequency level	50-862 MHz / > 95 dBµV
	Constellation - Symbol rate	16, 32, 64, 128, 256 QAM (EN 300 429) - 4,00 - 6,96 Msps
<b>Power</b>	DC - 2.1 mm - connector	+5V
	Consumption	15 Watts
<b>Dimensions</b>	LxWxH	200x135x67mm
	Weight	0.6 kg
<b>EAN code</b>	TM4HDV	5420037692576

\* for DVBC modulation, the DVBT modulator can be reconfigured as DVBC modulator using the conversion button in DTVIface.