

ANTTRON

TMX170HD

**HD Encoder
DVB-T/C out
HDMI loop**



USER MANUAL V1.0



The CE symbol on the device guarantees the compliance of the product with the European Directives on safety, and electromagnetic compatibility. The relative certificate of conformity can be requested from:

Anttron nv, Industrielaan 37, B-8820 Torhout



The crossed-out bin symbol shown on the equipment indicates that the product at the end of its useful life must be collected separately from other waste.

Important notice

The information contained in this manual is provided subject to errors and changes! The warranty does not cover damage resulting from the incorrect use of the information contained in this manual.

Safety warnings and installation instructions

1) CONNECTING TO THE MAINS SUPPLY

100-240V AC, 50/60 Hz

Connect this product only to a power supply having the characteristics indicated on its label. Disconnect the product from the power supply before carrying out any maintenance or connection procedures.

2) ELECTRIC OVERLOAD

In the event of an overload of the power supply network, there is a risk of short circuits and fire. The power cables must therefore never be overloaded.

3) LIQUIDS

The product must be protected from liquid infiltration. Make sure that no container of liquids is placed on the product and that it is not subject to any kind of splashing.

4) CLEANING

Before cleaning the product, it must be disconnected from the power supply. Use only a damp cloth, without adding solvents or detergents.

5) ACCESSORIES

Use only original accessories from the manufacturer. Otherwise, the product may be damaged.

6) INSTALLATION

The product must be installed in an environment well protected from liquid infiltrations and must never be subjected to direct solar radiation and other heat sources. Make sure it is placed at a minimum distance of 10 cm from other devices sensitive to electromagnetic radiation. To avoid possible damage to the product, mount it only on flat and stable surfaces. Use the product only indoors, it is not suitable for outdoor use.

7) VENTILATION AND INSTALLATION

To ensure optimal ventilation and thus avoid overheating of the product, the ventilation holes must never be covered.

Mount the product so that there is a minimum distance of 15 cm from the four sides, the front panel with the ventilation holes and other objects. In any case, the product must be installed in such a way as to guarantee the maximum possible natural ventilation (see illustration on page 5). Make sure that the product is not installed either in hermetically sealed places or near heat sources or other electronic equipment.

Use the special supports for wall mounting.

Warranty

The manufacturer warrants that this product is free from defects in construction or material under conditions of permitted use. The warranty covers a period of twenty-four months, subject to compliance with the instructions for use and maintenance. The warranty starts from the date of purchase of the device from the retailer.

Conditions of warranty

1. The warranty is limited to defects in material and construction. This excludes:
 - periodic checks, calibrations, software updates, maintenance, replacement of parts subject to normal wear;
 - damage caused by accidents, negligence, modifications, improper use or improper installation
 - damage caused by lightning, surges, liquids, fire, acts of war, vandalism, incorrect / insufficient or absent soil, insufficient ventilation or other causes not attributable to the manufacturer;
 - damage caused by repairs carried out by unauthorized service centers / unauthorized persons and / or the use of non-original spare parts;
 - products on which the label bearing the serial number has been removed or made illegible;
 - travel expenses and costs arising from the uninstallation / installation of the appliance.
2. Expenses arising from warranty repairs carried out by non-service centers or by unauthorized persons are not reimbursed.
3. All expenses related to interventions and requests for which there is no product defect are the responsibility of the user. This also applies to charges related to the installation and explanation of the rules of use of the appliance.
4. The manufacturer declines any liability related to indirect or consequential loss of accessories or damage caused to them.
5. These warranty conditions do not affect the rights provided in favor of the consumer according to the provisions of the Consumer Code (Legislative Decree 206/2005) or other national legislative provisions.

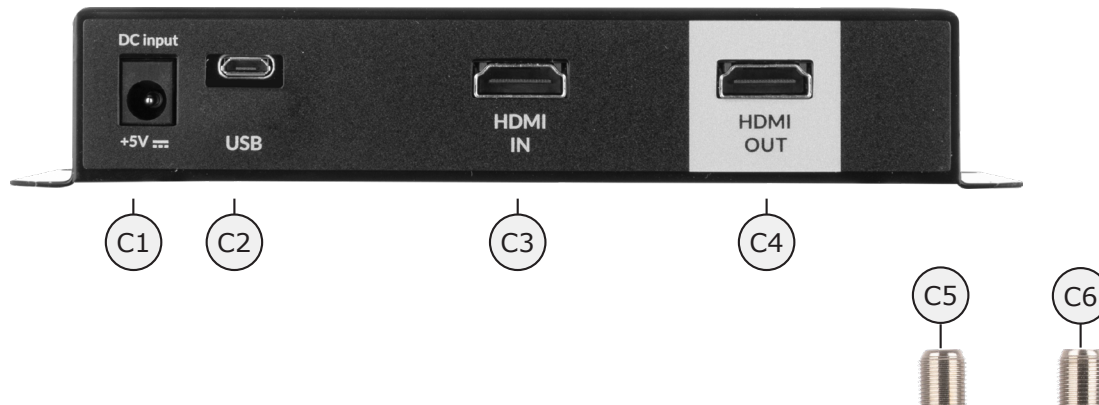
LIABILITY DISCLAIMER

This document is based on information available at the time of its publication. Although every effort has been made to ensure the accuracy of the content, the information contained therein is not intended to describe all the details or variations of the hardware and / or software, nor to cover any possible eventuality regarding installation and maintenance. The manual may describe functions that are not present in every hardware and / or software. The manufacturer assumes no obligation to notify the owners of this document regarding subsequent changes.

FEATURES AND INFORMATION CONTAINED IN THIS MANUAL ARE SUBJECT TO CHANGE WITHOUT NOTICE.

2 - Description of the different elements

- | | | | |
|-----------|----------------------------|-----------|----------------------|
| C1 | Power supply input (5V/2A) | C4 | HDMI output |
| C2 | USB input (PC programming) | C5 | RF output |
| C3 | HDMI input | C6 | RF input (loop loop) |

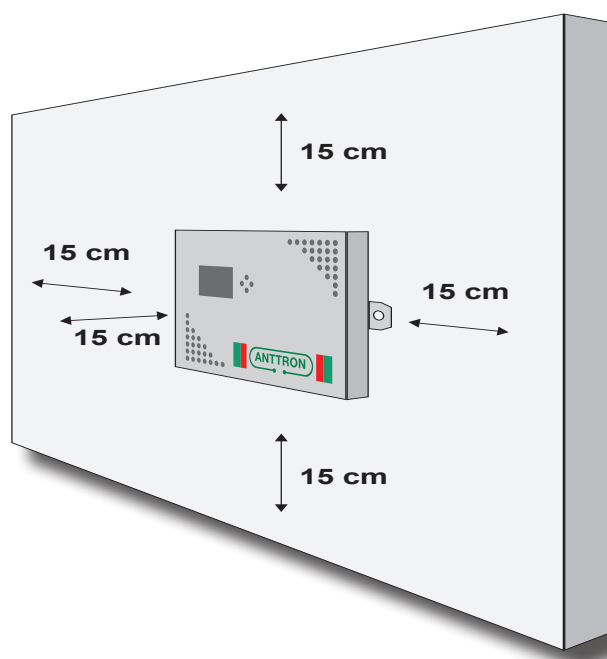
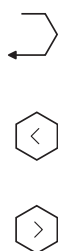


A1 Display

T1 ENTER

T2 LEFT/BACK

T3 RIGHT/FORWARD

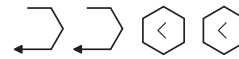


3 - Software settings :

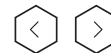
The TMX170HD has a quick menu to allow for quick basic settings. For advanced settings an advanced menu is available.

3.1 - Quick menu:

To enter the quick menu please push following sequence of buttons



When entered successfully, the quick menu comes accessible, use the buttons

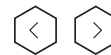


to move between the different menu options.

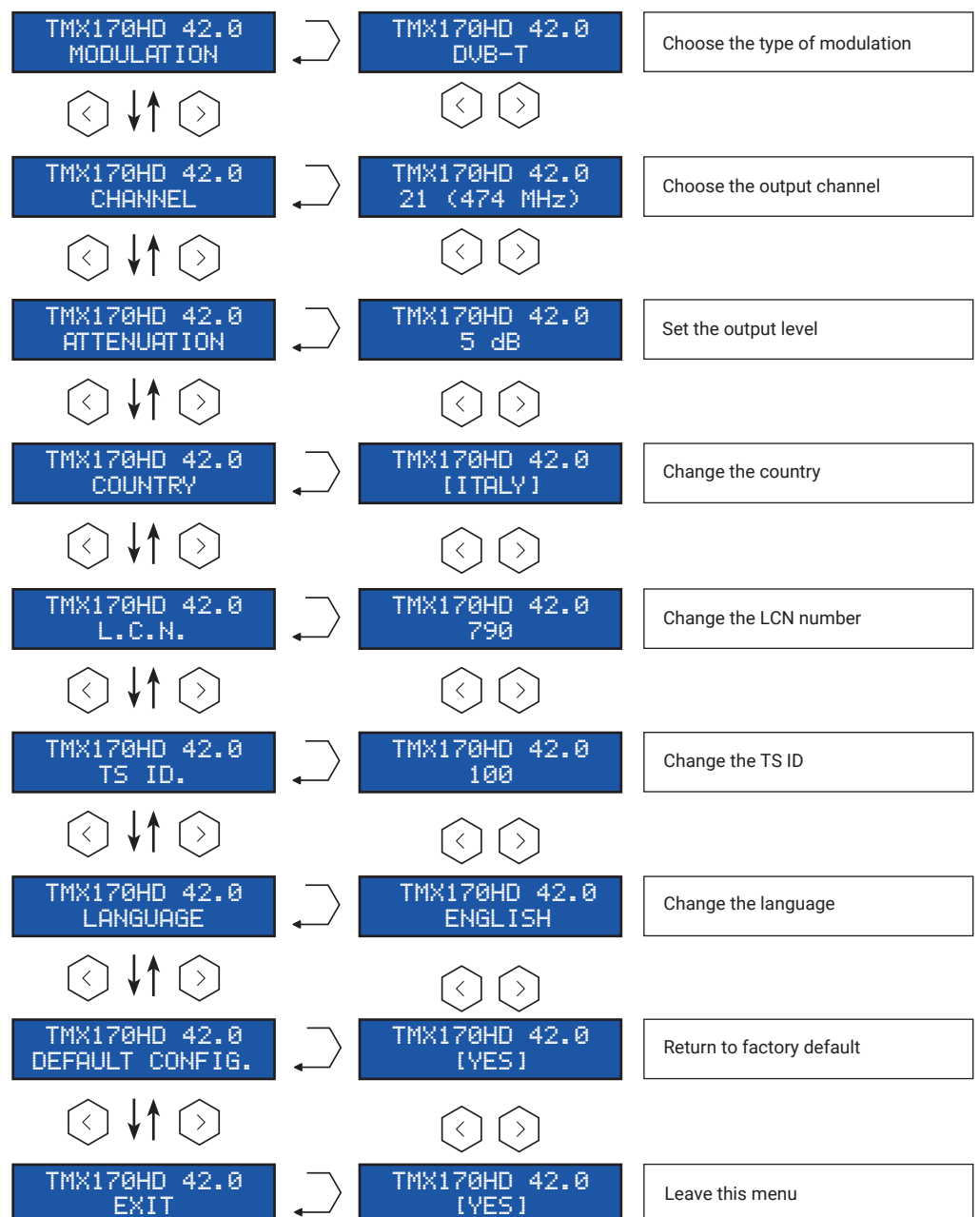
Click and hold the button



to select a menu option and use the buttons

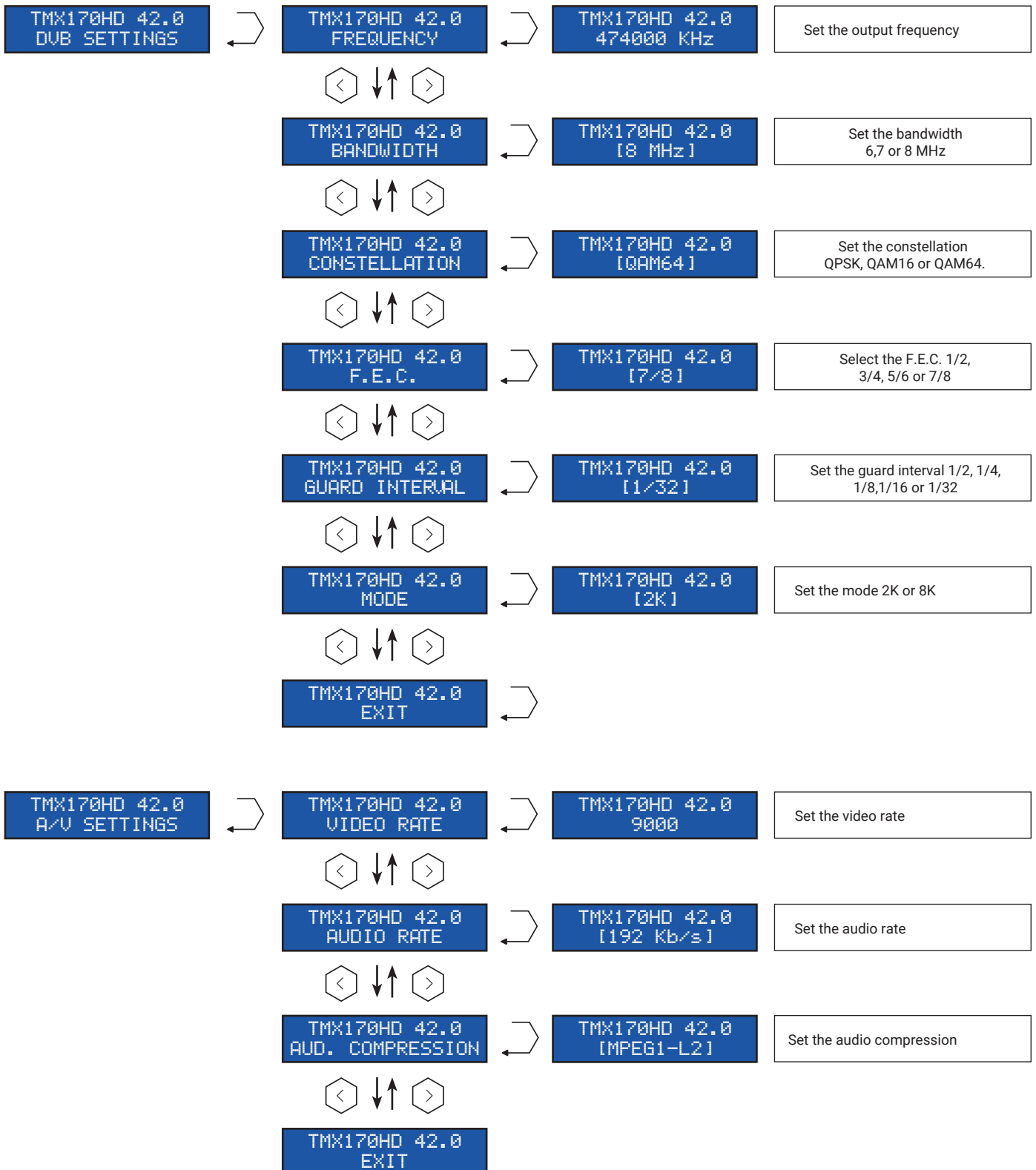
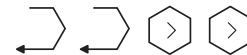


to change the value for that option. Changes are automatically saved.



3.2 - Advanced menu

To enter the advance menu please press the following sequence of buttons





) "Eg\q/b b c\j h c\ VE8

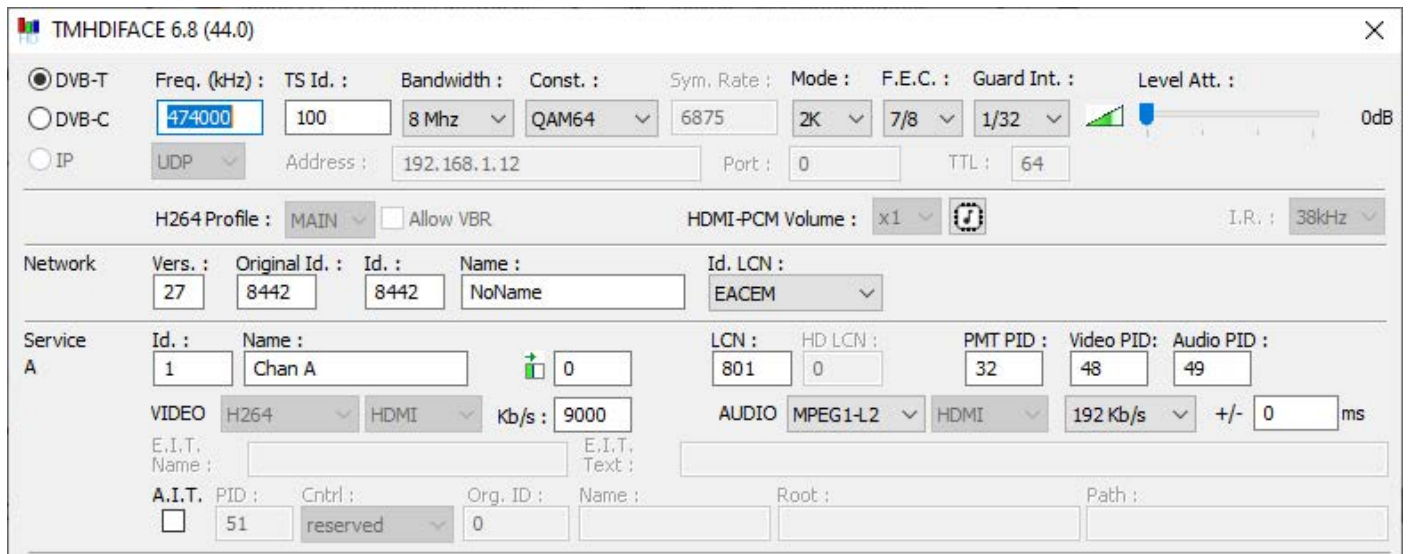
The settings of the TMX170HD can also be changed using a PC.

First, please install the software TMHDIFace on your PC. You can download this software from our internet site anttron.com

After installation of this software, connect the TMX170HD using a USB cable (not included) to your personal computer. Then launch the program TMHDIFace.

On the display of the TMX170HD the message <USB> appears, indicating that the programming is now performed through your PC. The following window appears on your screen.

Now, all parameters discussed in Chapter 3 of this user manual can be modified by TMHDIFace.



*** "1 ZX] c\X\ahZ\{X\i dch**

Video input	Input	HDMI
	Supported resolutions	480p -576p -720p - 1080i - 1080p
	Compression	H.264 – bitrate 5-15 Mb/s
Audio input	Input	HDMI
	Audio Rate	HDMI (32kHz / 44.1 kHz / 48 kHz)
	Compression	AAC-LC / MPEG1-L2– bitrate 128-384 Kb/s
DVB Processing	Supported tables	PAT, PMT, SDT, NIT
	Configuration	Channel/network name, SID, LCN, TSID, ONID, NID, versions, audio, video PIDs...
DVB-T output	Frequency / level	170-230 MHz + 470-862 MHz / > 82dBµV
	Constellation, FEC	QPSK/16QAM/64QAM - 1/2, 2/3, 3/4, 5/6, 7/8
	Guard Interval	1/4, 1/8, 1/16, 1/32
	Mode - MER	2K/8K > 34 dB
DVB-C output	Frequency / level	47-862 MHz / > 82 dBµV
	Constellation MER	QAM 16, 32, 64, 128, 256 / MER > 40 dB
Power supply	+ 5 V / connector DC 2,1 mm	
Consumption	5 W	
Dimensions LxWxH	150 x 130 x 35 mm	
Weight	0,5 kg	
EAN code	5420037691715	